

Le présent message contient des renseignements importants. Si vous avez besoin d'une traduction, veuillez communiquer avec info@transmountain.com.



Construction Notice

BLASTING WORK

We're working in the Coquihalla-Hope Region between the Coquihalla Summit and Popkum, BC

October 2020 to October 2022*

Trans Mountain plans to proceed with rock blasting work to support construction of the Trans Mountain Expansion Project in the Coquihalla-Hope Region between the Coquihalla Summit and Popkum, BC. Necessary regulatory approvals and permits for this work have been received.

Schedule of Blasting Work*

Location	Estimated Timing
Coquihalla Summit to Shylock	October 2020 to December 2020
Shylock to Othello Road	October 2020 to June 2021
District of Hope	January 2021 to June 2021
District of Hope to Popkum	June 2021 to October 2021

**Schedule and activities subject to change*

Blasting Process and Frequency

Blasting will take place on the Trans Mountain Expansion Project construction footprint. Under current planning, there will be three to four blasts each day taking place in the mid to late afternoon. These will be low vibration blasts, with the sites covered by blasting mats to avoid the dispersal of dust and debris. Double mats will be used in residential areas. All debris will be cleared following each blast and prior to reopening an area.

Public Safety

Appropriate safety measures and emergency response procedures will be in place to ensure the protection of workers and the public. All work will take place under the control of a blasting specialist, adhering to provincial and federal guidelines. Prior to the blast, safety personnel with radios will ensure no one is in the blast zone. No one will be allowed to enter the area until it is cleared by safety personnel.

Trans Mountain does not currently anticipate road or lane closures during the initial phase of blasting in the Coquihalla-Hope region. In future phases of blasting, if a lane closure is required, it will be conducted according to Ministry of Transportation and Infrastructure procedures. There will be no road or lane closures on weekends.

What You May Notice

You may notice a quiet rumble or thump during the blast. The perception of noise/vibration will correspond to the proximity to each of the sites. Road users are unlikely to notice any blasting activity.

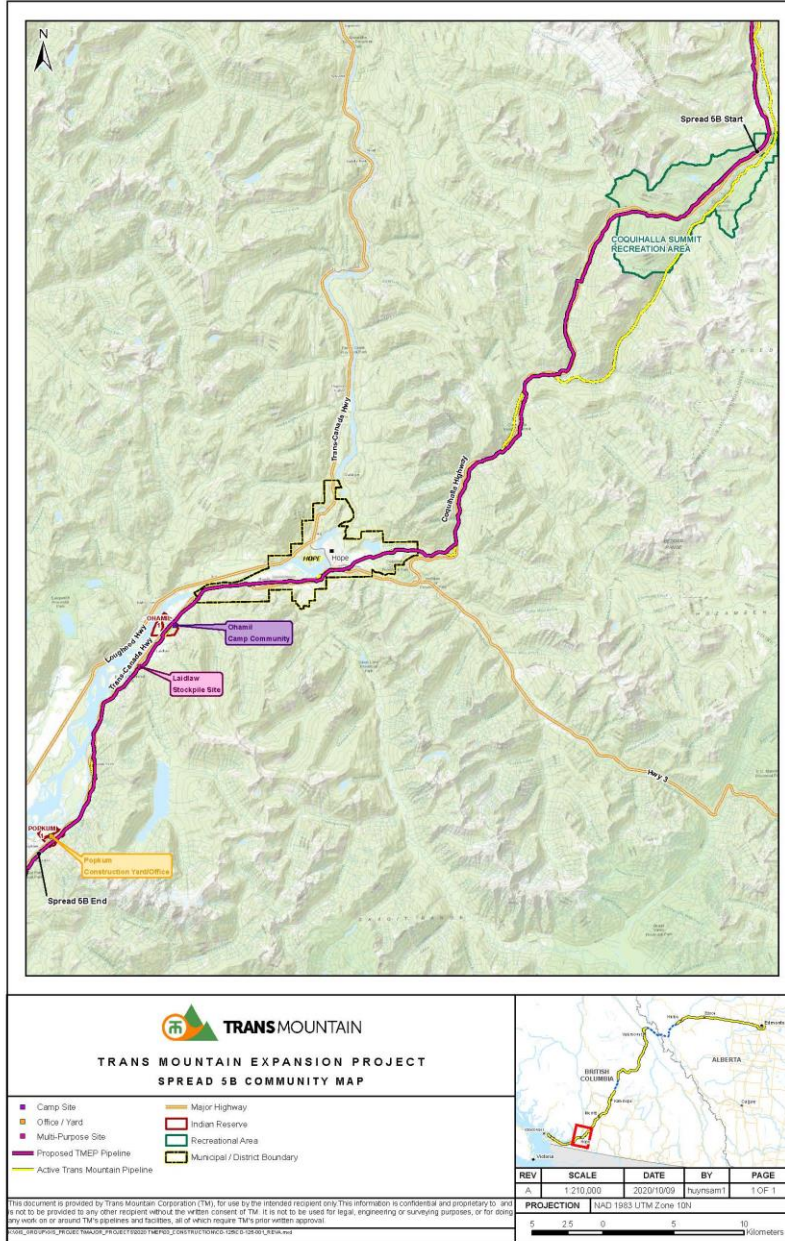
Trans Mountain conducts all work under its Environmental Protection and Pipeline Protection Programs to ensure compliance with applicable regulations and requirements.

For more information about the Trans Mountain Expansion Project go to transmountain.com or contact us at 1.866.524.6700 or info@transmountain.com.



Map of the Coquihalla-Hope Region (Spread 5B).

*Boundaries are approximate.



Trans Mountain's first priority is the health and safety of our workforce, their families and our communities. In response to the evolving COVID-19 pandemic, Trans Mountain and our construction contractors for the Trans Mountain Expansion Project have been working diligently together to ensure adherence to all advice and direction from government and health officials both provincially and federally. For more information on Trans Mountain's COVID-19 response, visit transmountain.com/covid19

CONTACT US:
Trans Mountain

- ✉ info@transmountain.com
- ☎ 1.866.514.6700
- 🌐 transmountain.com

- 🐦 @TransMtn
- 📺 youtube.com/transmtn

📍 PO Box 81018
Burnaby, BC V5H 3B0

Pipeline or construction emergency?
Call 24/7: 1.888.876.6711